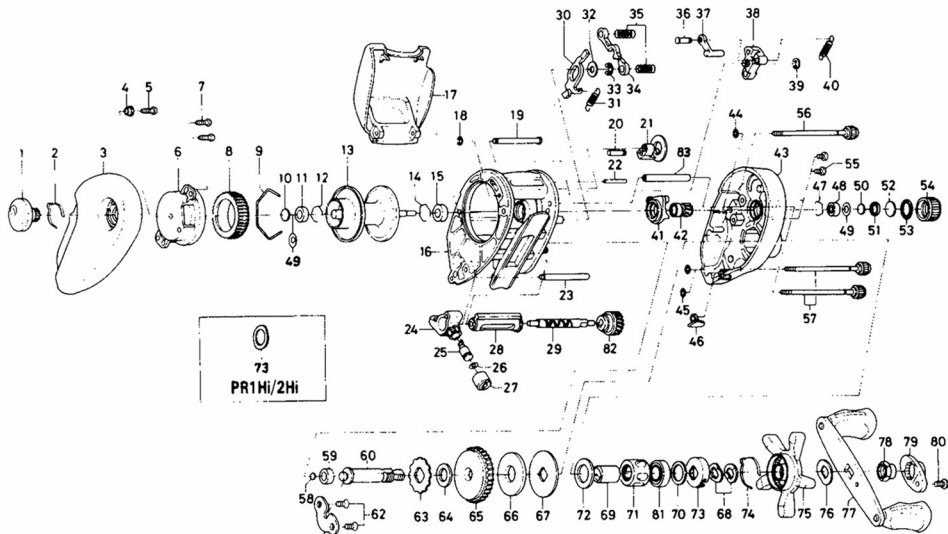


BAITCASTING REEL — TD1Hi / 2Hi, PR1Hi / 2Hi

(Special Parts, TD2Hi, PR1Hi/2Hi — continued on page 88.)



ムサシ オーバーホール作業用資料: リールのメンテは "ムサシ オーバーホール" で検索

1	F02-9605	Brake adjusting knob	3.90	43	F09-6601	Right side plate	16.00
2	F05-1701	Brake click spring	.95	44	B85-3101	"O" ring A	.60
3	F02-9201	Left side plate	13.50	45	B85-3101	"O" ring A	.60
4	F02-9801	Brake adjusting knob collar	.95	46	E16-9502	Line holder	.70
5	E15-7502	Brake adjusting knob screw	.45	47	E21-9701	Bearing retainer B	.50
6	F02-9401	Left set plate	9.65	48	E08-8001	Ball bearing B	9.45
7	E15-7502	Left set plate screw	.45	49	E25-6101	Oiled washer A	.85
8	B66-1201	Magnet holder	4.50	50	374-9102	Spool adjusting cap metal	.50
9	B54-3201	Magnet holder retaining ring	.50	51	E23-0501	Spacer B	.85
10	375-7405	Spacer A	.60	52	B17-5502	Spacer C	.85
11	B35-8601	Ball bearing A	8.75	53	171-5201	"O" ring B	1.15
12	B42-1601	Bearing retainer A	.45	54	B85-3401	Cast control cap	2.10
13	F05-0201	Spool assembly	16.00	55	353-4402	Set plate screw	.60
14	B42-1601	Bearing retainer A	.45	56	B91-1714	Right side plate screw A	4.00
15	B35-8601	Ball bearing A	8.75	57	B91-1710	Right side plate screw B	3.40
16	F07-4701	Frame assembly	30.50	58	B12-0201	Drive shaft washer A	.40
17	E39-3409	Palming plate	11.35	59	B35-8601	Ball bearing A	8.75
18	B86-4101	Stabilizer bar retainer	.50	60	F02-7401	Drive shaft	8.50
19	E39-2001	Stabilizer bar A	.95	61	E19-9401	Drive shaft retainer	.85
20	E39-1901	Flipping / casting selector pin	.70	62	B39-6503	Drive shaft retainer screw	.50
21	F02-6701	Flipping / casting selector	2.50	63	E32-7701	Anti-reverse ratchet	1.15
22	E19-6801	Stabilizer bar B	.85	64	E42-5301	Drive shaft washer B	.95
23	F02-9001	Stabilizer bar C	2.30	65	F02-7701	Drive gear	14.10
24	E39-3301	Line guide	5.10	66	F02-7801	Drag washer	2.85
25	121-4212	Line guide pawl	2.85	67	F06-2501	Key washer	1.95
26	375-4101	Line guide washer	.30	68	150-8901	Drag spring washer	.55
27	342-4801	Pawl cap	1.55	69	F02-8001	Gear shaft collar	15.15
28	F03-6001	Level wind guard	1.95	70	B55-3801	Oiled washer B	.40
29	E24-7101	Worm shaft	7.15	71	E42-1401	Roller clutch	19.75
30	F02-7101	Clutch trip plate	1.15	72	E42-5401	Spacing sleeve	.95
31	E43-0001	Clutch trip plate spring	.50	73	F02-8201	Click leaf spring holder	2.10
32	371-6903	Clutch trip plate washer	.35	74	F03-2401	Click leaf spring	.60
33	320-1402	Clutch trip plate retainer	.55	75	F02-8301	Star drag	5.90
34	E30-4301	Yoke	.95	76	150-9001	Friction washer	.45
35	E23-6401	Yoke spring	.55	77	E41-4101	Handle assembly	11.10
36	E19-7201	Clutch trip plate arm pin	.60	78	341-4101	Handle nut	2.10
37	E19-7101	Clutch trip plate arm	.65	79	F02-8801	Handle nut plate	.75
38	F02-6601	Clutch cam	1.40	80	351-1803	Handle nut plate screw	.45
39	B33-9801	Clutch cam retainer	.35	81	F05-5501	Ball bearing C	9.45
40	F05-3101	Clutch cam spring	.70	82	B99-2001	Worm shaft gear	1.70
41	E44-3801	Yoke plate	1.60	83	E42-5901	Stabilizer bar D	3.80
42	E24-9201	Pinion gear	9.50				